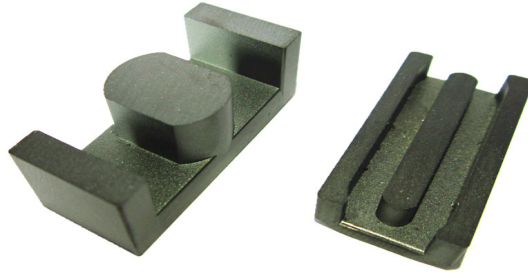


# Ferrite Cores

## Mn-Zn

### ED TYPE



NO.	Specifications	Dimension(mm)						
		A	B	C	D	E	F	G
1	ED25(fig2)	25.0±0.4	5.15±0.15	12.15±0.2	21.6±0.3	8.10min	1.50±0.15	2.95+0.1/-0.15
2	ED28(fig1)	28.0±0.5	10.4±0.3	12.1±0.5	8.5±0.2	20.5	6.7±0.3	
3	ED29(fig1)	29.8±0.8	14.8±0.2	11.6±0.2	8.4±0.2	21.8	11.2±0.2	
4	ED40(fig1)	40.80±0.5	9.7±0.2	21.85±0.25	11.00±0.3	30.3min	6.25±0.25	

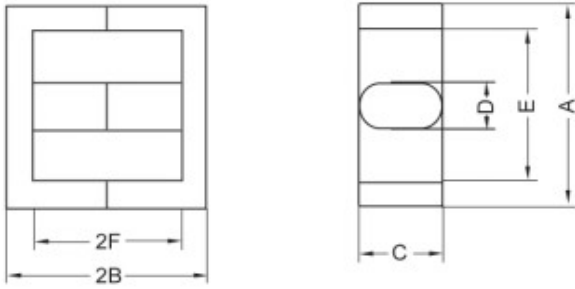


Fig 1

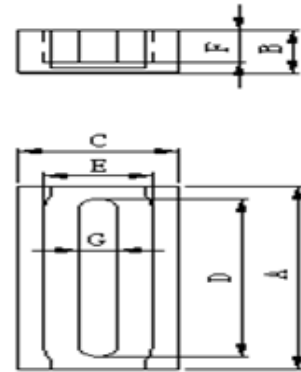


Fig 2